



Certificate of Analysis

UElandy Inc.

Room 302, Building 1, No.18& Chunyao Road,

Xiangcheng District, Suzhou,

Jiangsu Province P.R, 215143 China

www.uelandy.com

Refer to website for regional contact information.

| | | | |
|-----------------|---------------------------|------------------|------------|
| Product Name: | UE DNA Gel Extraction Kit | Lot ID: | 221008KE1 |
| Catalog Number: | UE-GX-250 | Expiration Date: | 10/07/2025 |

Quality Control

Electrophoretic Analysis

- Comparison of the Test Sample to a previously tested Standard. Acceptable range for Test Sample is $\leq \pm 10\%$ of Standard, based upon analysis. The “Standard” is a previously tested and validated sample.
- The recovery of DNA from agar gel is more than 65%.

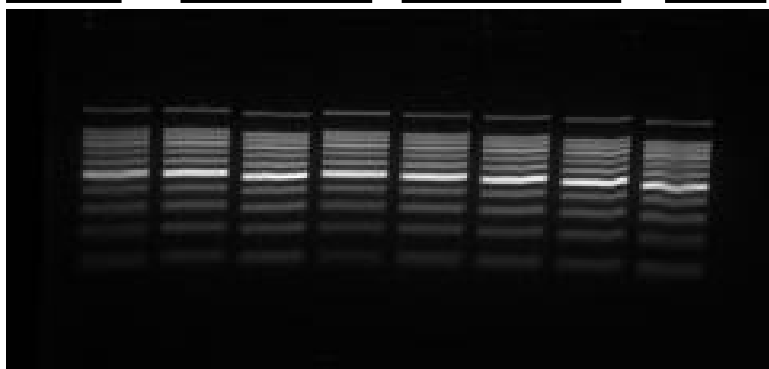
Recovery Analysis

- The recovery of DNA from agar gel is more than 65%. Loading 8 μ l UE-GX product mixture to the 2% agar gel for electrophoresis, and also loading 3.46 μ l and 5.33 μ l 100bp Ladder for 65% and 100% as contrast to estimate the recovery of purified PCR product by visual examination.

Gel Image and Test Data

| Item | Test Date | | | | | | Sample |
|--|-----------|-----|-----|-----|-----|-----|---|
| | 1 | 2 | 3 | 4 | 5 | 6 | |
| Yield (%) | 100 | 100 | 100 | 100 | 100 | 100 | 1,2,3 are Test Samples 4,5,6 are Standards |
| [Test Sample/Standard] Yield Difference | 0% | | | | | | PASS |

65%M TEST STANDARD 100%M



UElandy Inc. warrants and represents that all inspections and testing for the article described above have been performed at UElandy Inc. QC laboratory located on-site at the manufacturing plant. UElandy Inc. manufacturing facility is located at Room 302, Building 1, No.18& Chunyao Road, Xiangcheng District, Suzhou, Jiangsu Province P.R, 215143 China

(QC Inspector) *tian qin zheng*

(Approver) *Qin Hua-Yu*